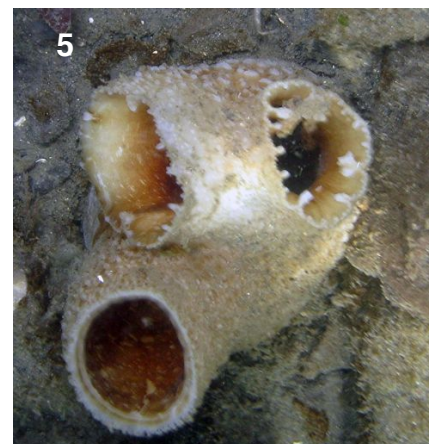


A strange occurrence happening to siphons of *Zirfaea pilsbryi* in Puget Sound by George P. Holm

Something in Puget Sound is causing the Rough Piddock, *Zirfaea pilsbryi* Lowe, 1931, to grow an extra siphon opening on either their inhalant or exhalant siphons. The strange phenomenon was observed on April 10 by club member, Karin Fletcher, in Rich Passage, a tidal strait near Bremerton that separates Bainbridge Island from the Kitsap Peninsula.

Karin had gone that day to photograph the Odostome snail, *Evalea tenuisculpta* (Carpenter, 1864), that she had previously observed feeding on the siphons of *Z. pilsbryi*. She was doing this to assist Rick Harbo and Pat LaFollette with the study they are currently conducting on *E. tenuisculpta* feeding on a wide variety of mollusks in our area: see ***The Dredgings*** Vol. 52 No. 2, 2012, p. 3.

To find one *Z. pilsbryi* with an abnormal siphon can be considered something that occasionally occurs in nature, but to observe three of the species with abnormal siphons on the same day, and in the same area, is definitely out of the ordinary. It is also interesting to note that the abnormality is not restricted to just one type of siphon, but can occur on both. If anyone should see this occurring elsewhere, please report it to George Holm at PNWSC@comcast.net



1 - A freshly dug *Zirfaea pilsbryi* 2 - A normal siphon 3 & 4 - Abnormality occurring on exhalant siphon 5 - Abnormality occurring on inhalant siphon